

STURDY
PRODUCTS LTD



Farm & Equestrian

STURDY GRANDE



Creep Feeder

Dimensions: Height 1020mm
Width 1180mm
Length 1180 mm
Capacity: 50kg
Code: 070 - A



Grande

Dimensions: Height 1030mm
Width 1165mm
Length 1165 mm
Capacity: 125kg
Code: 548 - A



Animal Revival Unit

Dimensions: Height 600mm
Width 630mm
Length 610 mm
Code: 382 - A



Surrogate Feeder

Dimensions: Height 600mm
Width 630mm
Length 610 mm
Code: 383 - A



Feed Trough

Dimensions: Height 160mm
Width 350mm
Length 2000mm
Feeds: 12 sheep
Code: 337 - A



The 4 wheeled product is designed to be strong and robust for use in harsh agricultural environments.

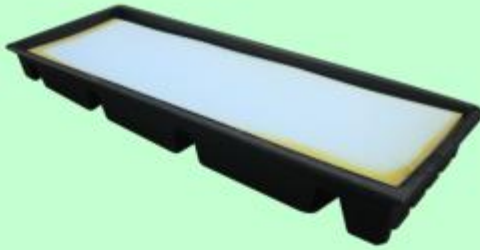
Using their teeth, sheep can rotate the rubberised wheels which in turn draws the molasses up from inside the unit.

One feeder full of molasses is suitable for servicing a flock of up to 200 sheep for over a week.

The large fill point allows for easy filling and the lid is lockable by means of a standard padlock. The feeder also comes with lifting hooks for easy of placement.

Molasses Feeder

Dimensions: Height 545mm
Diameter 1600mm
Capacity: 350L
Code: 394 - A



Disinfectant Footbath

Dimensions: Height 150mm
 Width 540mm
 Length 1500 mm
 Capacity: 85L
 Code: 280 - A



Sheep Footbath

Dimensions: Height 150mm
 Width 540mm
 Length 1500 mm
 Capacity: 85L
 Code: 369 - A



280gal Drink Trough

Dimensions: Height 600mm
 Width 1200mm
 Length 2200 mm
 Capacity: 1200L
 Code: 071 - A



40gal Drink Trough

Dimensions: Length: 880mm
 Width: 550mm
 Height: 480mm
 Capacity: 150L
 Code: 015 - A



400L Feed Storage Box

Dimensions: Length: 1200mm
 Height: 840mm
 Width: 800mm
 Capacity: 400L
 Code: 495 - B



Corner Manger

Capacity: 10L
 Code: 080 - A



Feed Bowl

Capacity: 10L
 Code: 076 - A

FODDER BELL

Is your fodder getting ruined
by rain?
Is your hay
or silage being spread
around your field by your
animals?
Is it being trampled into the
wet mud, ruining it?
Minimise wastage, use the
STURDY FODDER BELL



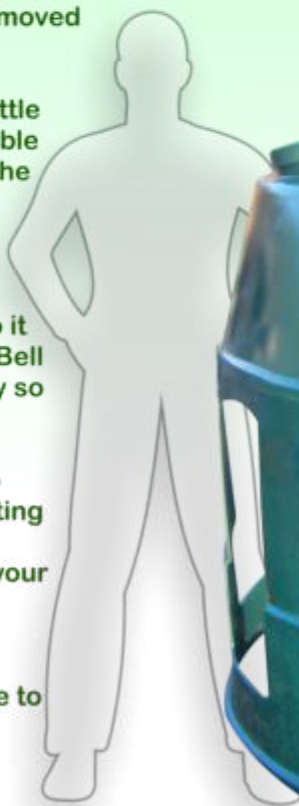
The STURDY FODDER BELL is designed to help keep fodder dry while out in an open field. The Fodder Bell can be fixed to the ground with large pegs driven into the ground, this keeps the product from being moved around.

The Fodder Bell can be used for horses, cattle or sheep. The sides of the product are flexible enough to allow animals push further into the feeder.

The size of the product accommodates one circular fodder bale or a fodder stack. The feed is contained within the product so it is not spread around the field. The Fodder Bell can be moved around the field occasionally so the ground is not ruined in one area.

There are 10 feeding stations for the sheep model, and 4 for the horse model, with a lifting eye on the top for ease of placement. The number of feeding stations can change at your request

If you would like further information, brochures or a quote please do not hesitate to contact us.



Fodder Bell

Dimensions: Diameter 1900mm
Height 1675 mm

Code: **558 - A**



Wash Trough	
Dimensions:	Height 900mm Width 483mm Length 675 mm
Capacity:	90L/ 20gal
Code:	014 - A



70 Gallon Trough	
Dimensions:	Length: 1 760mm Width: 660mm Height: 490mm
Capacity:	264L/ 70gal
Code:	016 - A



Stable Drinker	
Capacity:	15L/ 3gal
Code:	058 - A



Portable Manger	
Capacity:	10L/ 2gal
Code:	081 - A and 079 - A

STURDY Tipping Wheelbarrow

Designed for agricultural and equestrian use, the STURDY Tipping Wheelbarrow can be used anywhere to transport large amounts of material.

The wheelbarrow is balanced perfectly so even when fully loaded it is easy to lift and simple to tip.

Comes complete with plastic handles and a galvanised steel frame.

Two pumped wheels allow for ease of movement.

The smooth interior allows the wheelbarrow to be cleaned with ease.

As an optional extra, each wheelbarrow can be personalised with signage or manufactured in a particular colour to your specification.



Tipping Wheel Barrow

Dimensions:	Height 830mm Width 1020mm Length 1870 mm
Capacity:	310L
Code:	338 - A

STURDY Equi-Wash

The STURDY Equi - Wash contains power, pump and water all housed in one slim product. It allows the user to conveniently wash down horses without the need for a generator, buckets or large water tanks.

The portable power wash unit contains 100lit's of water, enough for cleaning down 3 horses.

The unit comes complete with a 5 meter hose and wash nozzle.

The Equi - Wash is fitted with a timer that shuts the unit off preventing pump burn out.

The product is powered by a 120Volt battery, complete with charger.

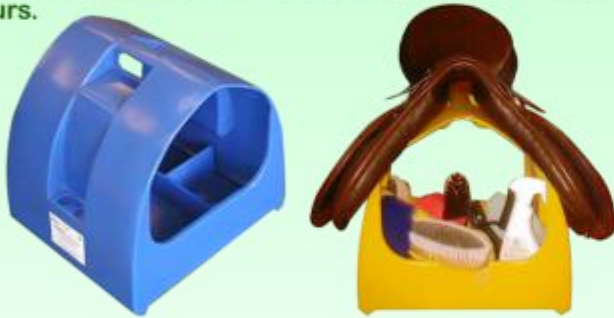
A fixing kit is also provided to attach the unit to a trailer.



Equi Wash	
Dimensions:	Height 1030mm Width 500mm Length 300 mm
Capacity:	310L
Code:	330 - A

STURDY Saddle Store

The STURDY Saddle Store is a unique storage product that allows you to carry your saddle, grooming kit and accessories in one tidy unit. Available in a range of colours.



Saddle Store

Code: 303 - A

Jobber

The STURDY Jobber is a strong, flexible storage unit ideal for vans and jeeps.

The product is durable, reliable and safe to use.



Jobber

Dimensions: Height 380mm
Width 900mm
Length 900 mm

Code: 181 - A



Jump Blocks

Dimensions: Height 370 mm
Width 215 mm
Length 610 mm

Code: 087 - A



Jump Poles

Dimensions: Diameter 150mm
Length 3600 mm

Code: 197 - A



Jump Wings

Dimensions: Height 1520mm
Width 1130mm
Length 3600 mm

Code: 240 - A

Polystore

by **STURDY**

The Sturdy Polystore is ideal for storing large quantities of animal feed.

The Polystore has a large capacity so one fill will last a long time. The feed will be kept away from moisture and rodents.

In order to maximise feed life, it is essential that the pellets remain dry for the entire storage cycle. Therefore the best solution for this is to install a Sturdy Polystore as it has been designed to keep its contents dry at all times.

The 1200L unit can be filled by using the cam fitting provided and a second cam fitting allows a dust filter to be fitted.



Technical Specifications

Dimensions: Height 2400mm
Width 685mm
Length 2600 mm
Code: 426 - A

STURDY Jeep Insert



Jeep Insert LWB

Dimensions: Height 470mm
Width 1380mm
Length 1700 mm

Code: 277 - A

Jeep Insert SWB

Dimensions: Height 470mm
Width 1460mm
Length 1200 mm

Code: 276 - A



STURDY PRODUCTS LIMITED

**Blessington Industrial Estate,
Blessington,
Co. Wicklow,
Ireland**

Tel: +353 (0)45 865044

Fax: +353 (0)45 865721

E-mail: sales@sturdyproducts.com

Website: www.sturdyproducts.com

Looking forward to hearing from you.