

STURDY Roundabout Bin

The STURDY Roundabout is a classically designed litter bin ideal for use in contemporary urban landscapes

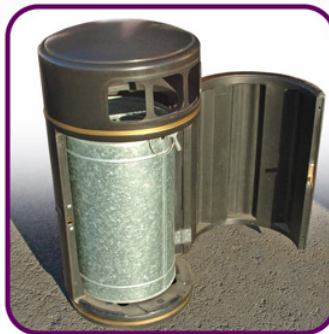


Bin Features:

- **Plastic Body:**
The compounded Polyethylene plastic body of the bin is UV stabilised. It will not fade, rust, require painting and is resistant to the majority of substances.
- **Internal Liner**
The roundabout bin comes complete with a galvanised steel liner with lifting handles to help when emptying.
- **Front Opening**
The large front opening ensures ease of access to the internal liner and can only be opened using a triangular key. A corrosion resistant slam-lock is also fitted.
- **Safety**
The bin is ideal for use in areas of high pedestrian traffic as the smooth rounded shape prevents injury to the public in crowded areas.
- **Small Aperture**
The small sized aperture prevents large objects from being put into the bin (i.e. pizza boxes, bags of waste, etc.) and prevents the bin from being filled up too quickly.
- **Ashtray**
Stub-it-Out ashtray and cowl are available as optional extras. The ashtray can be emptied with ease through the front opening of the bin.



Small Aperture



Galvanised Liner



Slam Lock



Stub-it-out Ashtray



PRODUCT DETAILS

CAPACITY: 85 litres
(19 gallons)

HEIGHT: 1,120 mm (44")

DIAMETER: 500 mm (20")